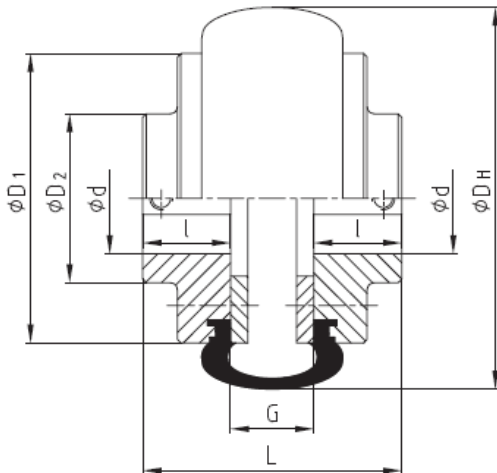


KTR – TYRE COUPLINGS

Item	Description	Quantity On Hand	Nett Price
40KT040TB1	KT40 TYRE COUPLING HALF..TB1 TO SUIT TAPER LOCK BUSH 1008	6	18.00
40KT040TB2	KT40 TYRE COUPLING HALF..TB2 TO SUIT TAPER LOCK BUSH 1008	8	18.00
40KT040TYRE	KT40 NEOPRENE TYRE	4	12.00
40KT045PB	KT45 TYRE COUPLING HALF..PILOT BORE	6	22.00
40KT045TB1	KT45 TYRE COUPLING HALF..TB1 TO SUIT TAPER LOCK BUSH 1108	6	22.00
40KT045TB2	KT45 TYRE COUPLING HALF..TB2 TO SUIT TAPER LOCK BUSH 1108	6	22.00
40KT045TYRE	KT45 NEOPRENE TYRE	13	12.00
40KT050PB	KT50 TYRE COUPLING HALF..PILOT BORE	6	24.00
40KT050TB1	KT50 TYRE COUPLING HALF..TB1 TO SUIT TAPER LOCK BUSH 1210	6	26.00
40KT050TB2	KT50 TYRE COUPLING HALF..TB2 TO SUIT TAPER LOCK BUSH 1210	6	26.00
40KT050TYRE	KT50 NEOPRENE TYRE	6	20.00
40KT060TB1	KT60 TYRE COUPLING HALF..TB1 TO SUIT TAPER LOCK BUSH 1610	5	40.00
40KT060TB2	KT60 TYRE COUPLING HALF..TB2 TO SUIT TAPER LOCK BUSH 1610	5	40.00
40KT060TYRE	KT60 NEOPRENE TYRE	26	28.00
40KT070PB	KT70 TYRE COUPLING HALF..PILOT BORE	5	54.00
40KT070TB1	KT70 TYRE COUPLING HALF..TB1 TO SUIT TAPER LOCK BUSH 1610	6	56.00
40KT070TB2	KT70 TYRE COUPLING HALF..TB2 TO SUIT TAPER LOCK BUSH 1610	5	56.00
40KT070TYRE	KT70 NEOPRENE TYRE	21	36.00
40KT080PB	KT80 TYRE COUPLING HALF..PILOT BORE	1	72.00
40KT080TB1	KT80 TYRE COUPLING HALF..TB1 TO SUIT TAPER LOCK BUSH 2012	6	79.00
40KT080TB2	KT80 TYRE COUPLING HALF..TB2 TO SUIT TAPER LOCK BUSH 2012	6	79.00
40KT080TYRE	KT80 NEOPRENE TYRE	13	28.00
40KT085PB	KT85 TYRE COUPLING HALF..PILOT BORE	6	84.00
40KT085TB1	KT85 TYRE COUPLING HALF..TB1 TO SUIT TAPER LOCK BUSH 2012	6	90.00
40KT085TB2	KT85 TYRE COUPLING HALF..TB2 TO SUIT TAPER LOCK BUSH 2012	3	90.00
40KT090PB	KT90 TYRE COUPLING HALF..PILOT BORE	6	98.00
40KT090TB1	KT90 TYRE COUPLING HALF..TB1 TO SUIT TAPER LOCK BUSH 2517	5	104.00
40KT090TB2	KT90 TYRE COUPLING HALF..TB2 TO SUIT TAPER LOCK BUSH 2517	5	104.00
40KT090TYRE	KT90 NEOPRENE TYRE	29	74.00
40KT100PB	KT100 TYRE COUPLING HALF..PILOT BORE	3	118.00
40KT100TB1	KT100 TYRE COUPLING HALF..TB1 TO SUIT TAPER LOCK BUSH 2517	1	126.00
40KT100TYRE	KT100 NEOPRENE TYRE	1	72.00
40KT110TB1	KT110 TYRE COUPLING HALF..TB1 TO SUIT TAPER LOCK BUSH 2517	3	144.00
40KT110TB2	KT110 TYRE COUPLING HALF..TB2 TO SUIT TAPER LOCK BUSH 2517	3	144.00
40KT110TYRE	KT110 NEOPRENE TYRE	8	108.00
40KT120TB1	KT120 TYRE COUPLING HALF..TB1 TO SUIT TAPER LOCK BUSH 3020	7	206.00
40KT120TYRE	KT120 NEOPRENE TYRE	11	120.00
40KT140PB	KT140 TYRE COUPLING HALF..PILOT BORE	4	254.00
40KT140TB1	KT140 TYRE COUPLING HALF..TB1 TO SUIT TAPER LOCK BUSH 3535	2	254.00

Item	Description	Quantity On Hand	Nett Price
40KT140TYRE	KT140 NEOPRENE TYRE	7	124.00
40KT160PB	KT160 TYRE COUPLING HALF..PILOT BORE	4	436.00
40KT160TB1	KT160 TYRE COUPLING HALF..TB1 TO SUIT TAPER LOCK BUSH 4040	2	436.00
40KT160TB2	KT160 TYRE COUPLING HALF..TB2 TO SUIT TAPER LOCK BUSH 4040	2	436.00
40KT160TYRE	KT160 NEOPRENE TYRE	2	194.00
40KT180PB	KT180 TYRE COUPLING HALF..PILOT BORE	2	586.00
40KT180TB1	KT180 TYRE COUPLING HALF..TB1 TO SUIT TAPER LOCK BUSH 4545	2	586.00
40KT180TB2	KT180 TYRE COUPLING HALF..TB2 TO SUIT TAPER LOCK BUSH 4545	2	586.00
40KT180TYRE	KT180 NEOPRENE TYRE	2	204.00

Prices do not include GST
While stocks last



Size	Screws			Size	Screws		
	M ₁	z = No.	T _A [Nm]		M ₁	z = No.	T _A [Nm]
KT-40	M 6x25	8	15	KT-90	M10x50	12	74
KT-45	M 6x30	8	15	KT-100	M12x50	12	128
KT-50	M 6x35	8	15	KT-110	M14x70	12	205
KT-60	M 6x30	10	15	KT-120	M16x70	12	315
KT-70	M 8x40	12	37	KT-140	M20x70	12	615
KT-80	M 8x50	12	37	KT-160	M24x80	12	1060
KT-85	M10x45	12	74	KT-180	M24x90	12	1060

Size	Torques [Nm]		Max. speed ¹⁾ [1/min]	Finish bore d (min-max)	Dimensions [mm]						Weight [kg]
	T _{KN}	T _{Kmax.}			D _H	L	D ₁	D ₂	l	G	
KT-40	22	44	4500	10 - 30	104	67	82	-	22	22	2,1
KT-45	39	78	4400	10 - 32	120	73	94	-	25	24	2,3
KT-50	57	114	4300	14 - 38	133	92	100	-	32	25	4,2
KT-60	112	224	3400	15 - 48	165	112	125	73	38	33	5,3
KT-70	172	344	2900	15 - 55	197	132	144	82	45	40	8,4
KT-80	269	538	2700	20 - 65	211	150	167	95	51	43	12,5
KT-85	325	650	2550	20 - 70	222	153	180	103	53	44	14,5
KT-90	387	774	2430	20 - 76	235	164	190	110	57	46	15,6
KT-100	536	1072	2250	25 - 85	254	178	216	124	60	48	22,0
KT-110	757	1514	2050	30 - 90	279	180	233	134	65	44	29,2
KT-120	1258	2516	1820	35 - 102	314	207	264	152	76	49	42,9
KT-140	1999	3998	1590	50 - 120	359	204	313	195	89	24	63,8
KT-160	3308	6616	1420	60 - 140	402	220	345	216	102	30	89,9
KT-180	5825	11650	1210	70 - 150	470	258	398	266	114	46	145

1) higher speeds on request